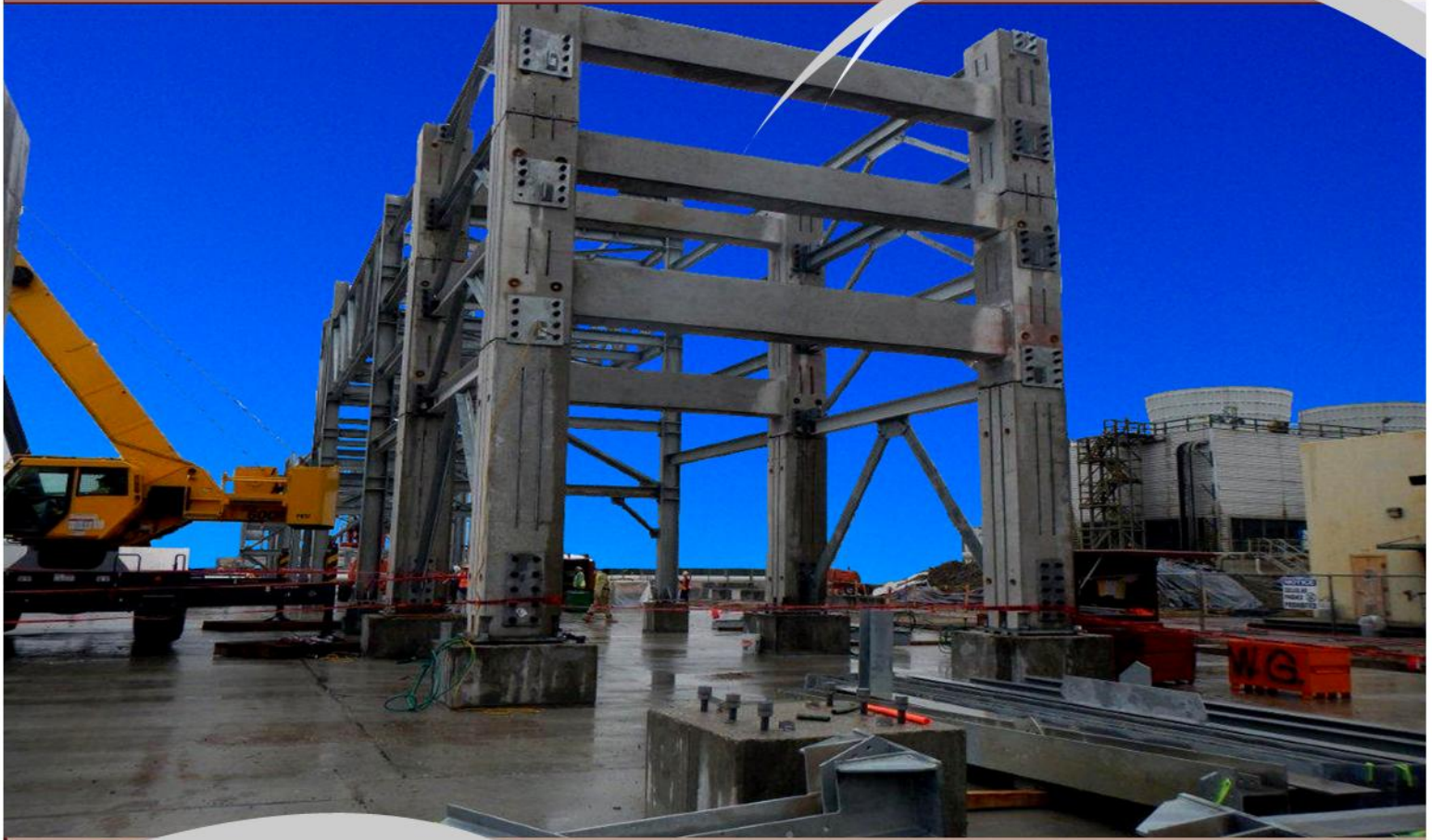


# Flexicore of Texas - Industrial



Transportation  
Commercial  
Fireproofing  
Industrial

PRECAST / PRESTRESSED CONCRETE PRODUCTS

- MARINE CONSTRUCTION
- PLANT EXPANSIONS
- BLAST BUILDINGS
- INSULATED PANELS
- STADIUM CONSTRUCTION
- PIPE YARDS
- COMMERCIAL PROJECTS
- DEEP FOUNDATIONS
- COLUMNS / BEAMS
- MECHANICAL FOUNDATIONS

(COVER PHOTO)

PLAQUEMINE, LA

- Precast Pipe Racks

SABINE PASS PIPELINE

INTERCONNECT

- Precast Platform
- Prestressed Pile
- Precast Pile Caps (Beams)

## FLEXICORE OF TEXAS

### Special Products Division

Flexicore of Texas is located in Houston, Texas and is one of the leading producers of precast / prestressed concrete products serving the transportation, commercial and industrial markets in Texas and the Gulf Coast Regions. Flexicore of Texas teams with engineering experts to design the products we build. Our engineering partners are leaders in the precast / prestressed industry.

Over our 60 year history, Flexicore of Texas has built a strong reputation as a quality and service leader in the industry. Owners, engineers and contractors continuously rely on Flexicore of Texas to be their preferred design and manufacturing partner for their construction projects.

Our offerings include standard products such as piling, bridge beams and deck panels. However, Flexicore of Texas excels as a provider of custom designed products. Pipe Racks, trenches, vaults, dock structures, dolphin caps, wall panels and foundation blocks are some of the items that we have provided.

Call us today for assistance with your design , pricing and manufacturing needs.





## HACKBERRY, LA

- Wall Panels



## MONT BELVIEU, TX

- Blast Resistant Wall Panels



## US COAST GUARD STATION - GALVESTON, TX

- Prestressed Dock Panels
- Piling
- Piling Caps



## CUSTOM PIPE SUPPORTS

- Freeport, TX
- Deer Park, TX



## PORT OF CORPUS CHRISTI

- Dock Panels



## FREEPORT, TX

- Piling
- Pile Caps
- Box Beams for Bridge



## PORT ARTHUR, TX

- Precast Pipe Racks



## FREEPORT, TX

- Dolphin Platform

Steel stabbing guide cast into bottom of panel to attach to 8' diameter monopile

